

NOTE: The location of utilities is approximate only, the exact location should be determined by consulting the municipal authorities and utility companies concerned. The contractor shall prove the location of utilities and shall be responsible for adequate protection from damage.

No.	Description	By	Date (dd/mm/yy)
1	ISSUED FOR TENDER	K.P.	11/03/2019
2	ISSUED FOR ADDENDUM 1	K.P.	15/03/2019

- SEWER NOTES:
- EXISTING COMBINED SEWER TO BE ABANDONED AND FILLED WITH FLOWABLE 0.40mPA CONCRETE.
 - LOCATE AND CONNECT TO EXISTING SEWER. USE APPROVED SEWER TRANSITION COUPLING WHEN JOINING NEW PIPE TO EXISTING PIPE. SUBMIT SHOP DRAWINGS TO CONTRACT ADMINISTRATOR FOR REVIEW AND APPROVAL.
 - CONTRACTOR TO DETERMINE TYPE OF SEWER LATERAL, SANITARY OR STORM, WHICH LATERAL IS ACTIVE, AND CONNECT ACTIVE LATERALS TO THE NEW SEWERS.
 - FILL ABANDONED SEWER SERVICES WITH FLOWABLE 0.40 mPa CONCRETE. BREAK INTO EXISTING MAINTENANCE HOLE, REMOVE AND REPLACE BENCHING TO MATCH INVERTS TO MAINTAIN FLOW.
 - SEE GRADING AND DRAINAGE 3 FOR CATCHBASIN DATA.

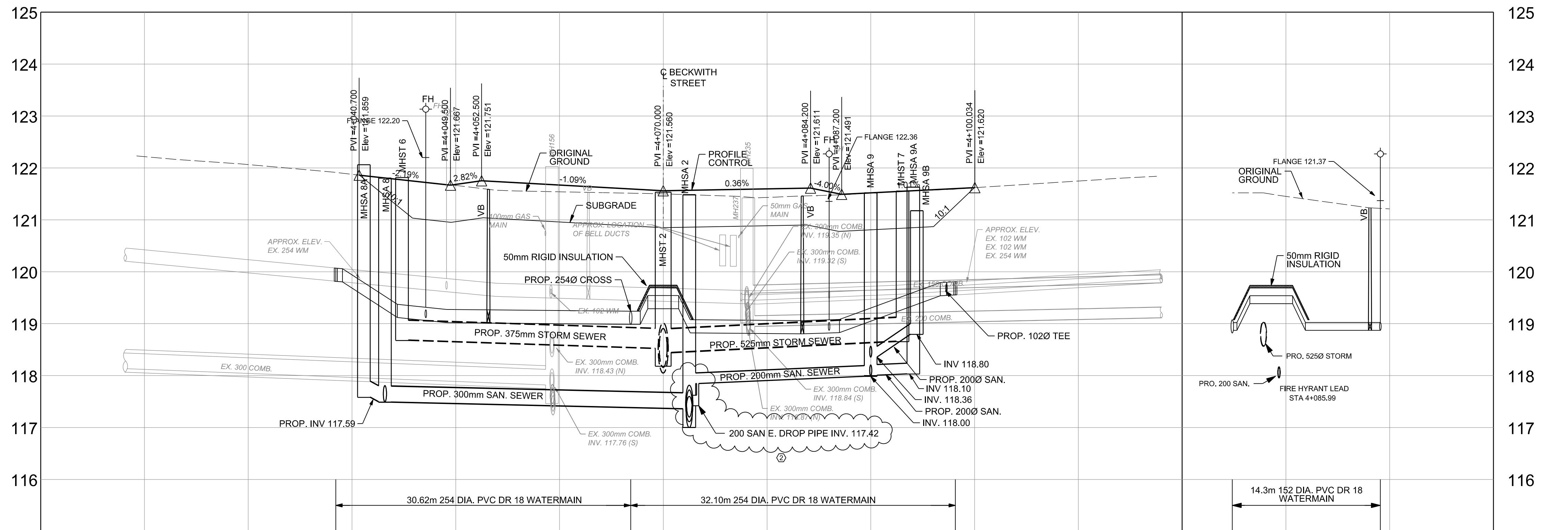
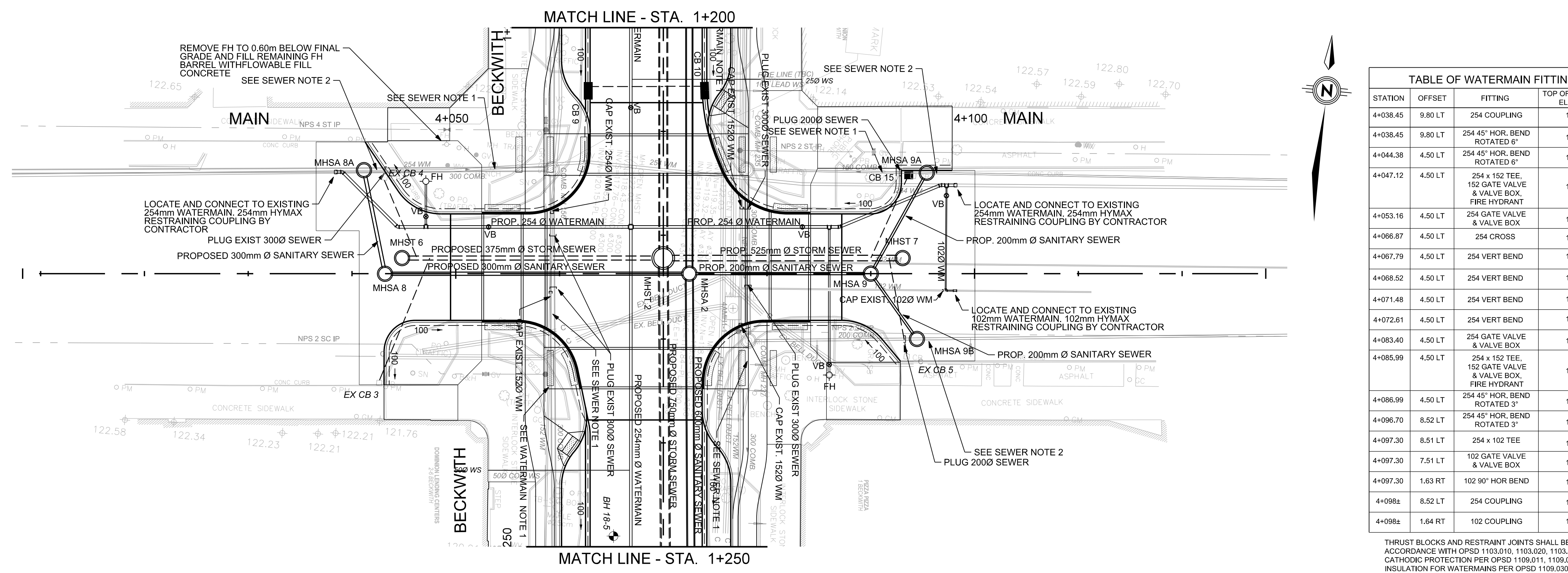
- WATERMAIN NOTES:
- EXISTING WATERMANS TO BE CAPPED AND FILLED WITH FLOWABLE 0.40 mpa CONCRETE.
 - LOCATE AND CONNECT TO EXISTING WATERMAIN, USE APPROVED WATERMAIN COUPLING WHEN JOINING NEW PIPE TO EXISTING PIPE. SUBMIT SHOP DRAWINGS TO CONTRACT ADMINISTRATOR FOR REVIEW AND APPROVAL.
 - PROVIDE MINIMUM 2.40m OF COVER OVER WATERMAIN.
 - WATER SERVICE MATERIAL SHALL BE COPPER TYPE 'K'.

NO.	STATION	OFFSET	COVER	STRUCTURE	T/GRATE	ELEVATION
MHSA 8A	4+041.15	9.97 LT	OPSD 401.020	OPSD 701.010	122.06	117.59
MHSA 8	4+043.18	0.00	OPSD 401.020	OPSD 701.010	121.80	117.50
MHSA 9	4+090.00	0.00	OPSD 401.020	OPSD 701.010	121.52	118.00
MHSA 9A	4+095.39	9.71 LT	OPSD 401.020	OPSD 701.010	121.62	118.10
MHSA 9B	4+094.44	6.30 RT	OPSD 401.020	OPSD 701.010	121.17	118.80

NO.	STATION	OFFSET	COVER	STRUCTURE	T/GRATE	ELEVATION
MHST 6	4+044.83	1.50 LT	OPSD 401.020	OPSD 701.010	121.81	118.69
MHST 7	4+093.07	1.50 LT	OPSD 401.020	OPSD 701.010	121.58	118.67

STATION	OFFSET	FITTING	TOP OF WATERMAIN ELEVATION
4+038.45	9.80 LT	254 COUPLING	120.0±
4+038.45	9.80 LT	254 45° HOR. BEND ROTATED 6°	120.0±
4+044.38	4.50 LT	254 45° HOR. BEND ROTATED 6°	119.37
4+047.12	4.50 LT	254 x 152 TEE, 152 GATE VALVE & VALVE BOX, FIRE HYDRANT	119.32
4+053.16	4.50 LT	254 GATE VALVE & VALVE BOX	119.27
4+066.87	4.50 LT	254 CROSS	119.24
4+067.79	4.50 LT	254 VERT BEND	119.24
4+068.52	4.50 LT	254 VERT BEND	119.54
4+071.48	4.50 LT	254 VERT BEND	119.54
4+072.61	4.50 LT	254 VERT BEND	119.07
4+083.40	4.50 LT	254 GATE VALVE & VALVE BOX	119.06
4+085.99	4.50 LT	254 x 152 TEE, 152 GATE VALVE & VALVE BOX, FIRE HYDRANT	119.06
4+086.99	4.50 LT	254 45° HOR. BEND ROTATED 3°	119.08
4+096.70	8.52 LT	254 45° HOR. BEND ROTATED 3°	119.8±
4+097.30	8.51 LT	254 x 102 TEE	119.8±
4+097.30	7.51 LT	102 GATE VALVE & VALVE BOX	119.8±
4+097.30	1.63 RT	102 90° HOR BEND	119.8±
4+098±	8.52 LT	254 COUPLING	119.8±
4+098±	1.64 RT	102 COUPLING	119.8±

THRUST BLOCKS AND RESTRAINT JOINTS SHALL BE IN ACCORDANCE WITH OPSD 1103.010, 1103.020, 1103.021 CATHODIC PROTECTION PER OPSD 1109.011, 1109.025 INSULATION FOR WATERMANS PER OPSD 1109.030 WATERMAIN MATERIALS: PVC, CL 150, DR-18



Station	Profile	Watermain	Storm	Sanitary
4+010	122.22			
4+020	122.06			
4+030	121.88			
4+040	121.68	PROPOSED 25.17m 375mm Ø PVC DR 35 STORM SEWER AT 0.66%	PROPOSED 23.07m 450mm Ø PVC DR 35 STORM SEWER AT 1.0%	PROPOSED 10.07m 300mm Ø PVC DR 35 SANITARY SEWER AT 1.00%
4+050	121.66			
4+060	121.67			
4+070	121.56			
4+080	121.60			
4+090	121.52			
4+100	121.62			
4+110	121.75			
4+120	121.75			

Consultant's Information: H:\BOWEN\7491000\DWGS\05-Addendum\012-19-PW-001-30-GRP-06.Dgn
 Plot Date: 3/11/2019 3:28:23 PM
 Plot Date: 3/11/2019 4:01:02 PM