



Contract No. 19-PW-001  
 Dwg. No. 010  
 Sheet 010 of 025

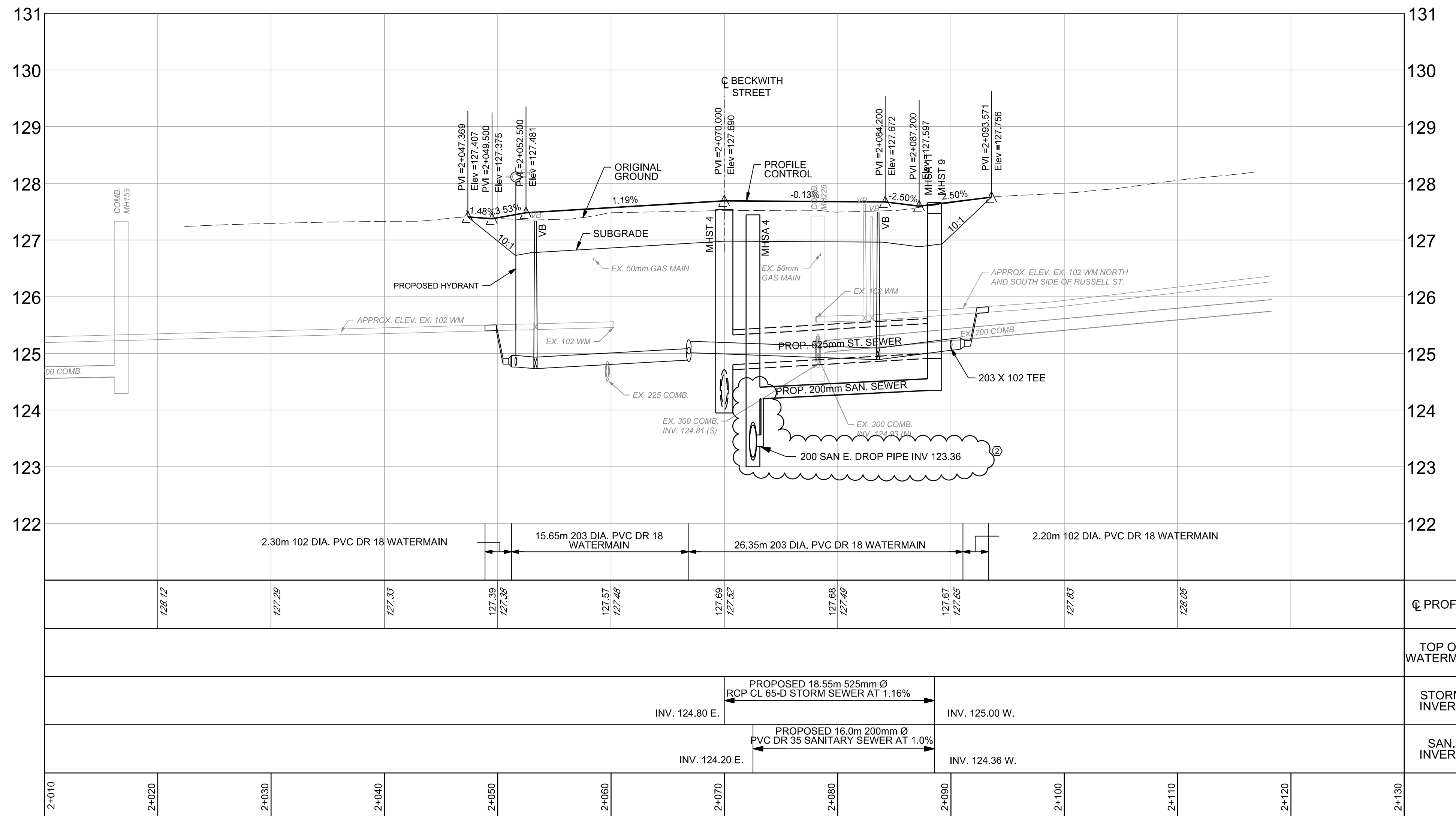
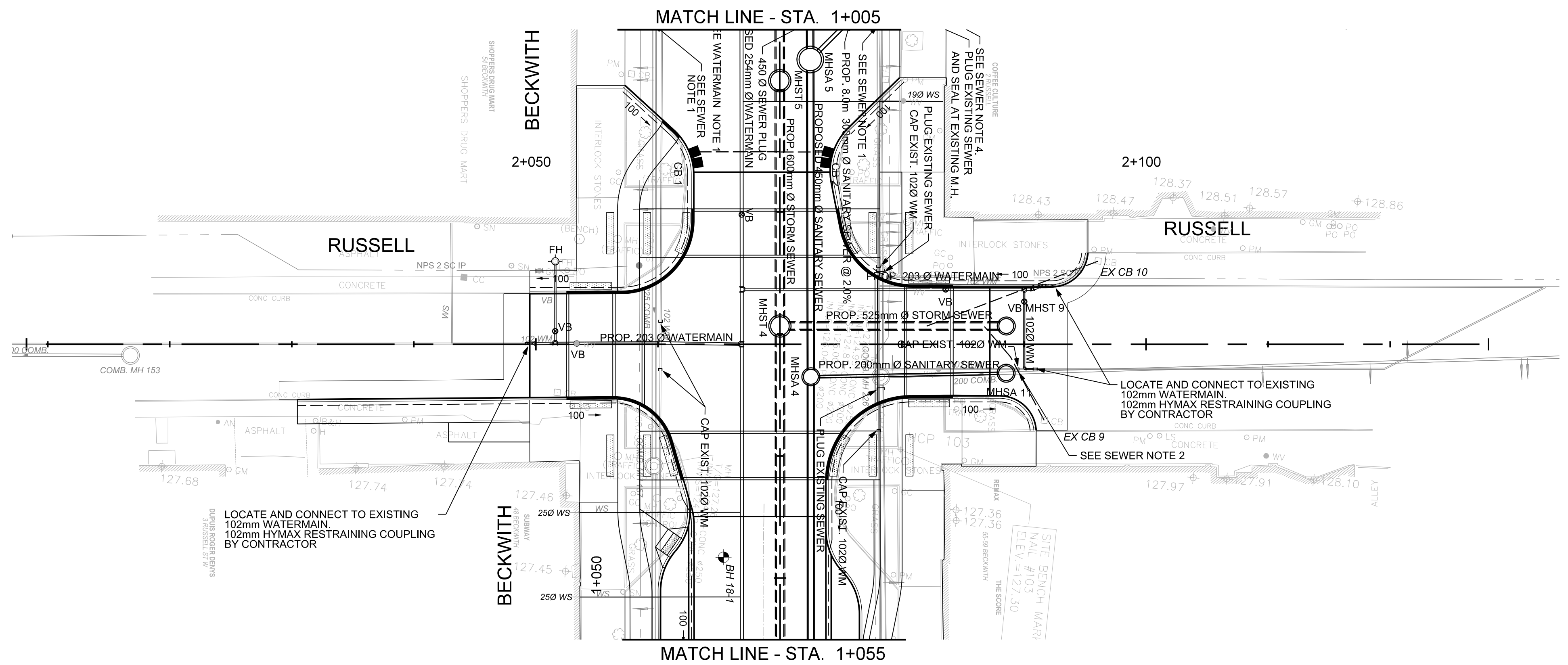
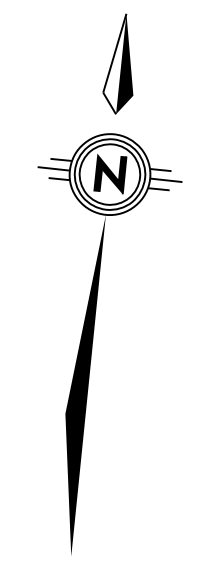
Des.	DDC/PJH	Chk'd.	CLER/MEM
Dwn.	DDC/PJH	Chk'd.	CLER/MEM
Const. Inspector			
Scale:	HORIZONTAL 0m 2.5 5 10		
	VERTICAL 0m 1 2		

NOTE: The location of utilities is approximate only, the exact location should be determined by consulting the municipal authorities and utility companies concerned. The contractor shall prove the location of utilities and shall be responsible for adequate protection from damage.

No.	Description	By	Date (dd/mm/yy)
1	ISSUED FOR TENDER	K.P.	11/03/2019
2	ISSUED FOR ADDENDUM 1	K.P.	15/03/2019

- SEWER NOTES:**
- EXISTING COMBINED SEWER TO BE ABANDONED AND FILLED WITH FLOWABLE 0.40mPA CONCRETE.
  - LOCATE AND CONNECT TO EXISTING SEWER. USE APPROVED SEWER TRANSITION COUPLING WHEN JOINING NEW PIPE TO EXISTING PIPE. SUBMIT SHOP DRAWINGS TO CONTRACT ADMINISTRATOR FOR REVIEW AND APPROVAL.
  - CONTRACTOR TO DETERMINE TYPE OF SEWER LATERAL, SANITARY OR STORM, WHICH LATERAL IS ACTIVE, AND CONNECT ACTIVE LATERALS TO THE NEW SEWERS.
  - FILL ABANDONED SEWER SERVICES WITH FLOWABLE 0.40 mPa CONCRETE.
  - BREAK INTO EXISTING MAINTENANCE HOLE, REMOVE AND REPLACE BENCHING TO MATCH INVERTS TO MAINTAIN FLOW.
  - SEE GRADING AND DRAINAGE 3 FOR CATCHBASIN DATA.

- WATERMAIN NOTES:**
- EXISTING WATERMANS TO BE CAPPED AND FILLED WITH FLOWABLE 0.40 mpa CONCRETE.
  - LOCATE AND CONNECT TO EXISTING WATERMAIN, USE APPROVED WATERMAIN COUPLING WHEN JOINING NEW PIPE TO EXISTING PIPE. SUBMIT SHOP DRAWINGS TO CONTRACT ADMINISTRATOR FOR REVIEW AND APPROVAL.
  - PROVIDE MINIMUM 2.40m OF COVER OVER WATERMAIN.
  - WATER SERVICE MATERIAL SHALL BE COPPER TYPE 'K'.



NO.	STATION	OFFSET	COVER	STRUCTURE	ELEVATION
				T/GRATE	LOW/INV.
MHSA 11	2+088.54	2.37 RT	OPSD 401.020	OPSD 701.010	127.48 124.36

- OFFSETS ARE FROM CONTROL LINE TO CENTRE OF STRUCTURE  
 - SLF DENOTES SELF LEVEL FRAME

NO.	STATION	OFFSET	COVER	STRUCTURE	ELEVATION
				T/GRATE	LOW/INV.
MHST 9	2+088.55	1.50 LT	OPSD 401.020	OPSD 701.010	127.66 125.00

- OFFSETS ARE FROM CONTROL LINE TO CENTRE OF STRUCTURE  
 - SLF DENOTES SELF LEVEL FRAME

STATION	OFFSET	FITTING	TOP OF WATERMAIN ELEVATION
2+048.9c	0.07 LT	102 COUPLING	125.5c
2+049.90	0.07 LT	102 22.5° VERT BEND	125.5c
2+050.45	0.07 LT	102 22.5° VERT BEND	124.91
2+051.10	0.07 LT	203 x 102 REDUCER	124.94
2+051.60	0.09 LT	203 x 152 TEE	124.96
2+051.60	1.08 LT	152 GATE VALVE & VALVE BOX	125.01
2+051.60	6.80 LT	FIRE HYDRANT	125.01
2+053.34	0.09 LT	203 GATE VALVE & VALVE BOX	124.93
2+066.87	0.01 LT	254 x 203 TEE	125.11
2+066.87	4.79 LT	254 x 203 TEE	125.24
2+083.58	4.81 LT	203 GATE VALVE & VALVE BOX	125.09
2+090.02	4.79 LT	203 x 102 TEE	125.26
2+090.02	3.79 LT	102 GATE VALVE & VALVE BOX	125.26
2+090.02	2.0c RT	203 x 102 TEE	125.2c
2+091.02	4.79 LT	203 x 102 REDUCER	125.25
2+091.72	4.79 LT	102 45° VERT. BEND	125.81
2+095.30	4.79 LT	102 45° VERT. BEND	125.8c
2+095.30	4.79 LT	102 COUPLING	125.8c

THRUST BLOCKS AND RESTRAINT JOINTS SHALL BE IN ACCORDANCE WITH OPSD 1103.010, 1103.020, 1103.021 CATHODIC PROTECTION PER OPSD 1109.011, 1109.025 INSULATION FOR WATERMANS PER OPSD 1109.030 WATERMAIN MATERIALS: PVC, CL 150, DR-18

Consultant's Information: H:\IS0176746\1000\DWGS\05-Addendum\010-19-PW-001-30-GRD-04.dgn  
 Plot Date: 3/14/2019 4:00:58 PM  
 Last Saved: 3/14/2019 8:58:32 AM