



NOTE: The location of utilities is approximate only, the exact location should be determined by consulting the municipal authorities and utility companies concerned. The contractor shall prove the location of utilities and shall be responsible for adequate protection from damage.

No.	Description	By	Date (dd/mm/yy)
1	ISSUED FOR TENDER	K.P.	11/03/2019
2	ISSUED FOR ADDENDUM 1	K.P.	15/03/2019
3	ISSUED FOR ADDENDUM 2	K.P.	19/03/2019

- SEWER NOTES:**
- EXISTING COMBINED SEWER TO BE ABANDONED AND FILLED WITH FLOWABLE 0.40mPA CONCRETE.
 - LOCATE AND CONNECT TO EXISTING SEWER. USE APPROVED SEWER TRANSITION COUPLING WHEN JOINING NEW PIPE TO EXISTING PIPE. SUBMIT SHOP DRAWINGS TO CONTRACT ADMINISTRATOR FOR REVIEW AND APPROVAL.
 - CONTRACTOR TO DETERMINE TYPE OF SEWER LATERAL, SANITARY OR STORM, WHICH LATERAL IS ACTIVE, AND CONNECT ACTIVE LATERALS TO THE NEW SEWERS.
 - FILL ABANDONED SEWER SERVICES WITH FLOWABLE 0.40 mPa CONCRETE. BREAK INTO EXISTING MAINTENANCE HOLE, REMOVE AND REPLACE BENCHING TO MATCH INVERTS TO MAINTAIN FLOW.
 - SEE GRADING AND DRAINAGE 3 FOR CATCHBASIN DATA.

- WATERMAIN NOTES:**
- EXISTING WATERMAINS TO BE CAPPED AND FILLED WITH FLOWABLE 0.40 mpa CONCRETE.
 - LOCATE AND CONNECT TO EXISTING WATERMAIN, USE APPROVED WATERMAIN COUPLING WHEN JOINING NEW PIPE TO EXISTING PIPE. SUBMIT SHOP DRAWINGS TO CONTRACT ADMINISTRATOR FOR REVIEW AND APPROVAL.
 - PROVIDE MINIMUM 2.40m OF COVER OVER WATERMAIN.
 - WATER SERVICE MATERIAL SHALL BE COPPER TYPE 'K'.

SANITARY MAINTENANCE HOLE DATA

NO.	STATION	OFFSET	COVER	STRUCTURE	T/GRATE	ELEVATION
						LOW/INV.
MHSA 5	1+007.51	2.50 LT	OPSD	OPSD	701.010	128.41 123.82
MHSA 4	1+033.51	2.50 LT	OPSD	OPSD	701.010	127.33 123.00

- OFFSETS ARE FROM CONTROL LINE TO CENTRE OF STRUCTURE
 - SLF DENOTES SELF LEVEL FRAME

STORM MAINTENANCE HOLE DATA

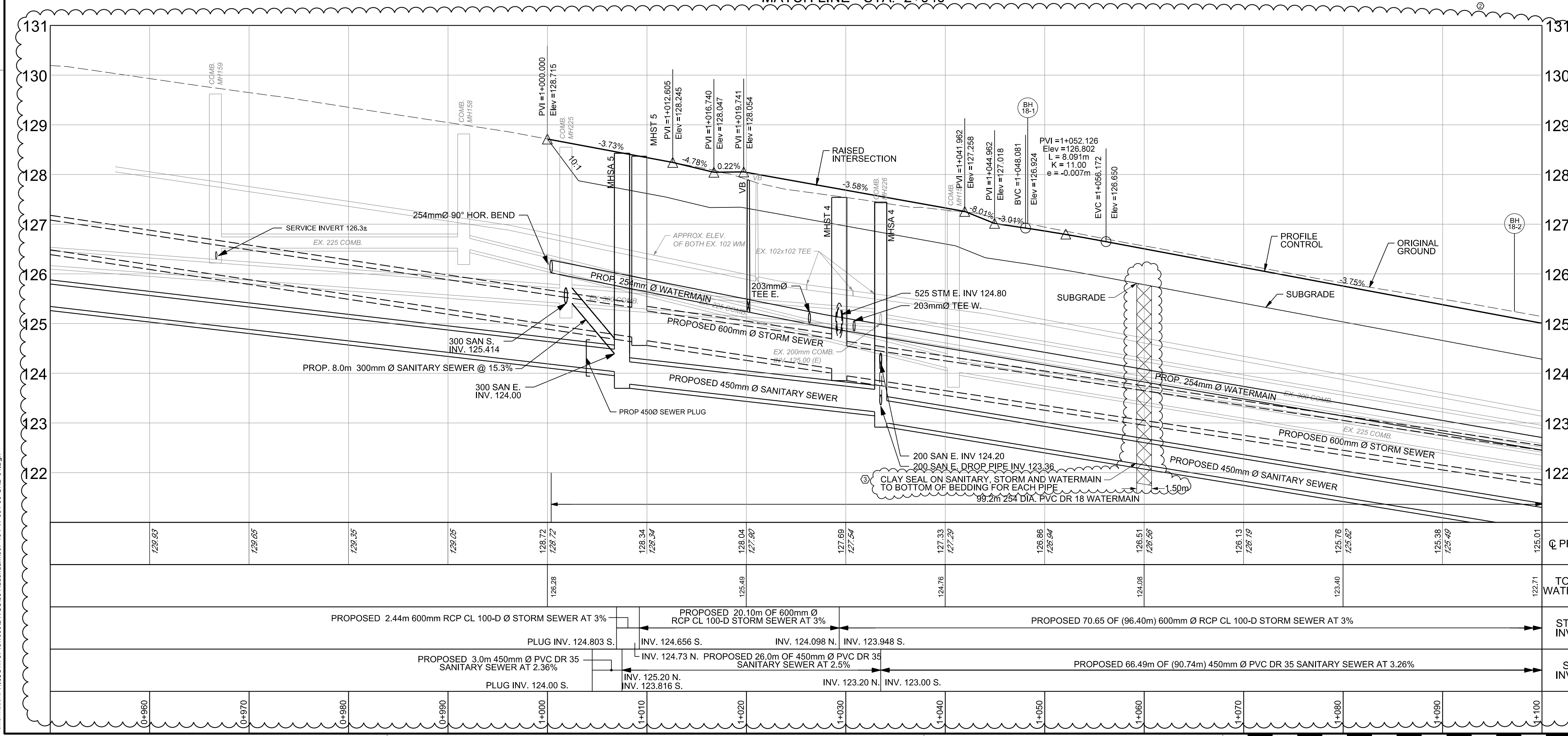
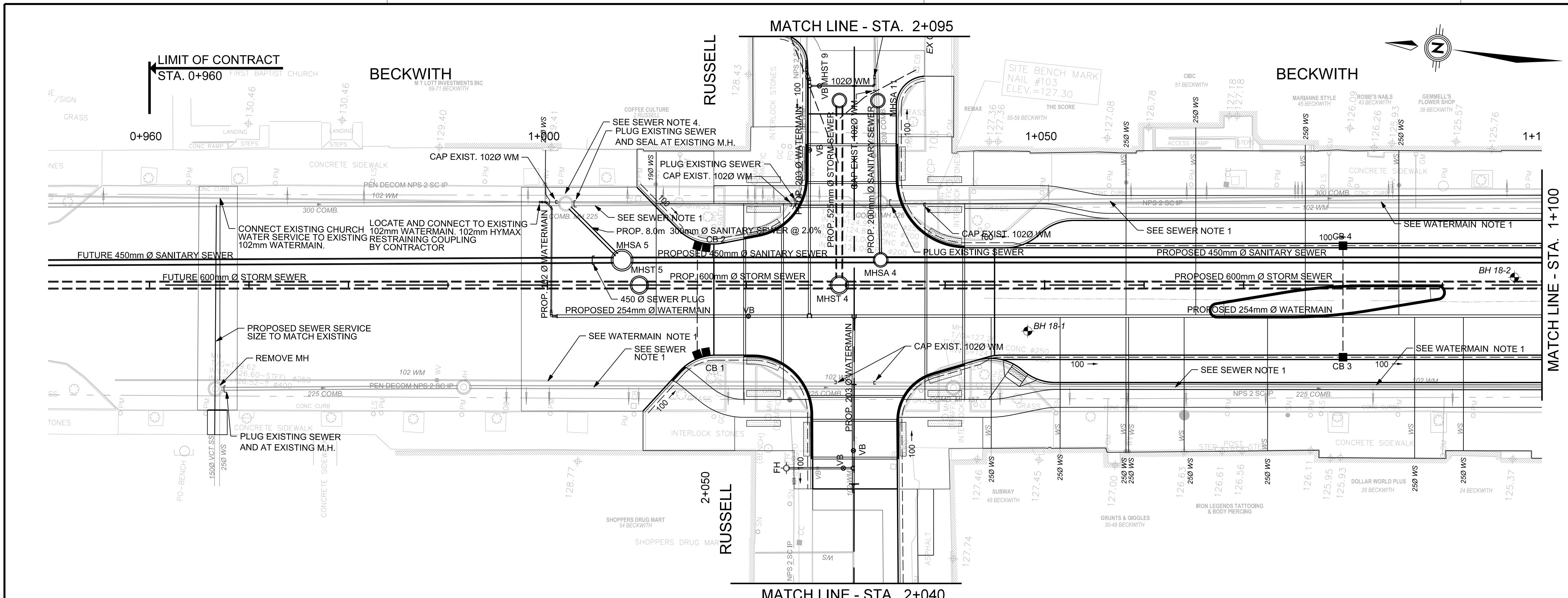
NO.	STATION	OFFSET	COVER	STRUCTURE	T/GRATE	ELEVATION
						LOW/INV.
MHST 5	1+009.24	0.00	OPSD	OPSD	701.011	128.37 124.656
MHST 4	1+029.35	0.00	OPSD	OPSD	701.011	127.52 123.948

- OFFSETS ARE FROM CONTROL LINE TO CENTRE OF STRUCTURE
 - SLF DENOTES SELF LEVEL FRAME

TABLE OF WATERMAIN FITTINGS

STATION	OFFSET	FITTING	TOP OF WATERMAIN ELEVATION
0+999.36	8.35± LT	102 COUPLING	126.8±
0+999.86	8.35± LT	102 45° HOR. BEND	126.8±
1+000.44	7.74± LT	102 45° HOR. BEND	126.8±
1+000.38	2.63 LT	254 x 102 REDUCER	126.40
1+000.38	3.13 RT	254 90° HOR. BEND	126.28
1+020.21	3.13 RT	254 GATE VALVE & VALVE BOX	125.49
1+026.01	3.13 RT	254 x 203 TEE	125.24
1+030.84	3.13 RT	254 x 203 TEE	125.11

THRUST BLOCKS AND RESTRAINT JOINTS SHALL BE IN ACCORDANCE WITH OPSD 1103.010, 1103.020, 1103.021 CATHODIC PROTECTION PER OPSD 1109.011, 1109.025 INSULATION FOR WATERMAINS PER OPSD 1109.030 WATERMAIN MATERIALS: PVC, CL 150, DR-18



Consultant's Information: H:\BCW\7461\000\DWG\05-Addendum007-19-PW-001-30-GRP-01.Dgn
 Plot Date: 3/18/2019 11:45:53 AM
 Last Saved: 3/18/2019 11:45:53 AM