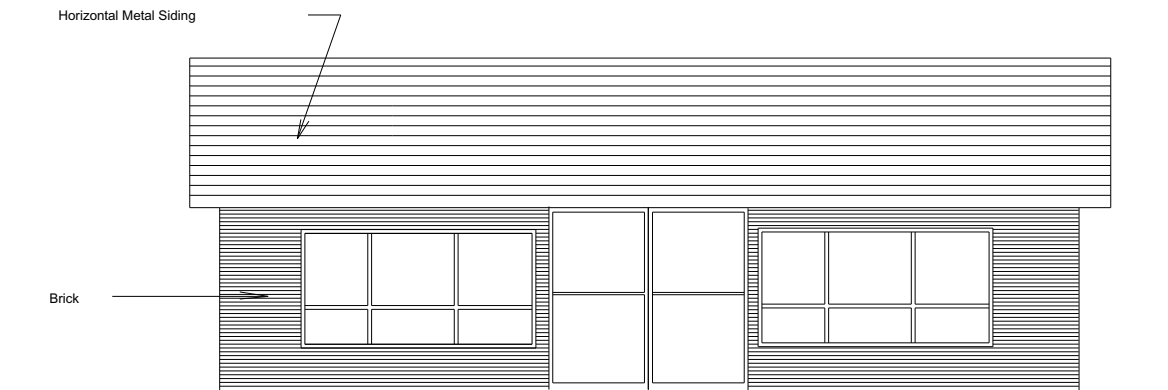
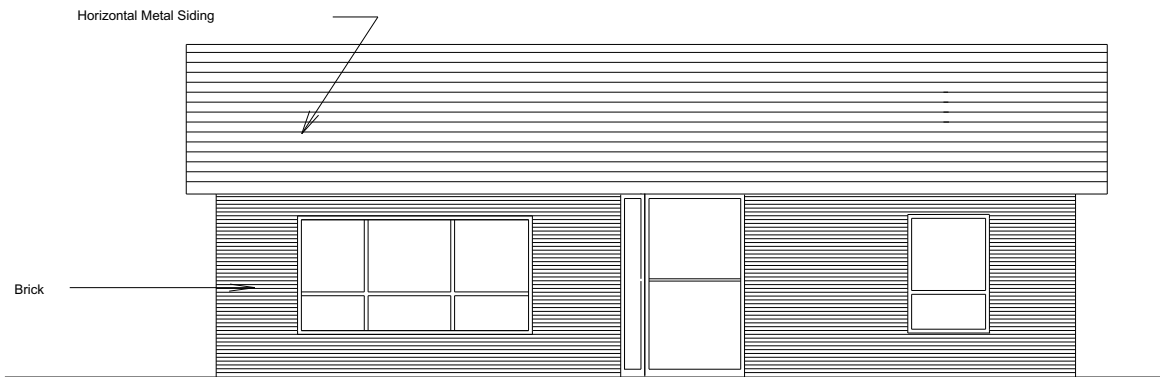


# BUILDING ELEVATIONS



South Elevation



North Elevation

East and West Elevation - similar but no doors or windows

NOTES: If other elevations are not similar please show plan indicating windows, doors, and material being used

CORPORATION  
TOWN OF  
SMITHS FALLS

BUILDING  
ELEVATIONS  
REQUIRED

DRAWN / REVISED BY:  
Dean Buchanan, CET  
Engineering Assistant

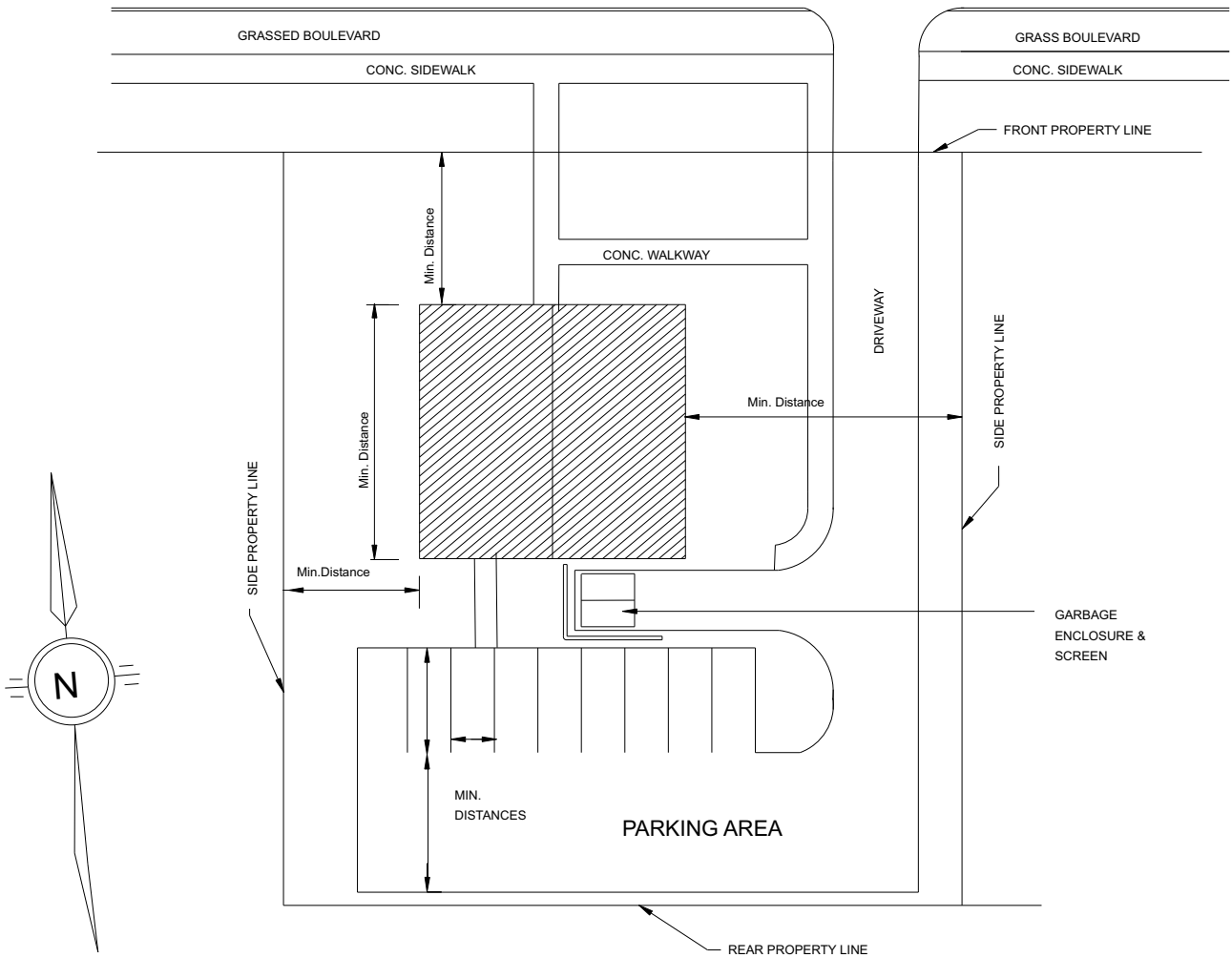
REV. DATE: January 2001

DWG. No.: BP-1

# SITE PLAN

EDGE OF ROADWAY

STREET NAME



NOTE: SITE PLAN TO INDICATE

- Size and dimensions of lot
- Dimensions of building(s) , existing and proposed
- Locations of building(s), on lot (ie. front, side, and rear yards
- location of enclosed garbage container

**CORPORATION  
TOWN OF  
SMITHS FALLS**

**SITE  
PLAN  
REQUIREMENTS**

DRAWN / REVISED BY:  
Dean Buchanan, CET  
Engineering Assistant

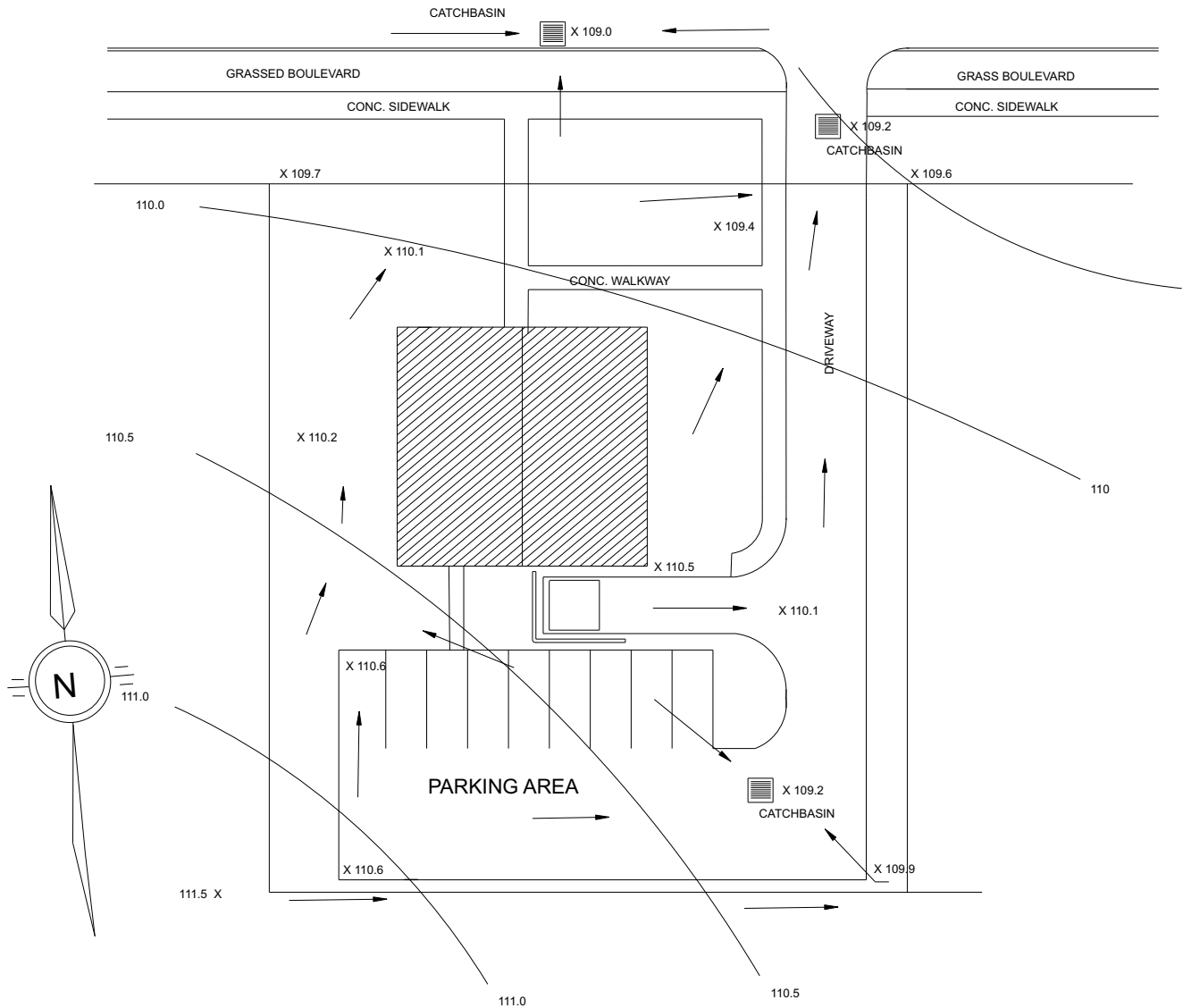
REV. DATE: January 2001

DWG. No.: **BP-2**

# GRADING PLAN

EDGE OF ROADWAY

STREET NAME



**NOTE: GRADING PLAN TO INDICATE**

- location and size of building services ie; sewer, water and storm sewer
- existing drainage ditches, proposed culverts
- elevations of building, parking areas, walkways, catbasins
- directions of proposed flow of storm water
- provide any storm water management calculation that may be required by the Town Engineer

**CORPORATION  
TOWN OF  
SMITHS FALLS**

**GRADING  
PLAN  
REQUIREMENTS**

DRAWN / REVISED BY:  
Dean Buchanan, CET  
Engineering Assistant

REV. DATE: January 2001

DWG. No.: **BP-3**